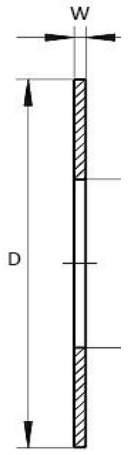




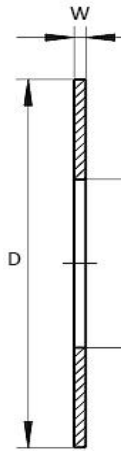
# TRA Series Imperial Thrust Needle Roller Bearing Washers



Shaft Diameter (inch)	Bearing Thrust Washer Part Number	d mm in	D mm in	W mm in	Weight (kg)
1/4	TRA411	6.35 <sup>+0.050/+0.300</sup>	17.45 <sup>-0.025/-0.760</sup>	0.76	0.001
		0.250 <sup>+0.002/+0.012</sup>	0.687 <sup>-0.010/-0.030</sup>	0.03	
5/16	TRA512	7.92 <sup>+0.050/+0.300</sup>	19.05 <sup>-0.025/-0.760</sup>	0.76	0.001
		0.312 <sup>+0.002/+0.012</sup>	0.750 <sup>-0.010/-0.030</sup>	0.03	
3/8	TRA613	9.53 <sup>+0.050/+0.300</sup>	20.625 <sup>-0.025/-0.760</sup>	0.76	0.001
		0.375 <sup>+0.002/+0.012</sup>	0.812 <sup>-0.010/-0.030</sup>	0.03	
1/2	TRA815	12.7 <sup>+0.050/+0.300</sup>	23.8 <sup>-0.025/-0.760</sup>	0.76	0.002
		0.500 <sup>+0.002/+0.012</sup>	0.937 <sup>-0.010/-0.030</sup>	0.03	
9/16	TRA916	14.275 <sup>+0.050/+0.300</sup>	25.4 <sup>-0.025/-0.760</sup>	0.76	0.002
		0.562 <sup>+0.002/+0.012</sup>	1.000 <sup>-0.010/-0.030</sup>	0.03	
5/8	TRA1018	15.88 <sup>+0.050/+0.300</sup>	28.575 <sup>-0.025/-0.760</sup>	0.76	0.003
		0.625 <sup>+0.002/+0.012</sup>	1.125 <sup>-0.010/-0.030</sup>	0.03	
3/4	TRA1220	19.05 <sup>+0.050/+0.300</sup>	31.75 <sup>-0.025/-0.760</sup>	0.76	0.003
		0.750 <sup>+0.002/+0.012</sup>	1.250 <sup>-0.010/-0.030</sup>	0.03	
7/8	TRA1423	22.23 <sup>+0.050/+0.300</sup>	36.5 <sup>-0.025/-0.760</sup>	0.76	0.004
		0.875 <sup>+0.002/+0.012</sup>	1.437 <sup>-0.010/-0.030</sup>	0.03	
7/8	TRA1427	22.23 <sup>+0.050/+0.300</sup>	42.85 <sup>-0.025/-0.760</sup>	0.76	0.007
		0.875 <sup>+0.002/+0.012</sup>	1.687 <sup>-0.010/-0.030</sup>	0.03	
1	TRA1625	25.4 <sup>+0.050/+0.300</sup>	39.675 <sup>-0.025/-0.760</sup>	0.76	0.005
		1.000 <sup>+0.002/+0.012</sup>	1.562 <sup>-0.010/-0.030</sup>	0.03	
1.1/8	TRA1828	28.58 <sup>+0.050/+0.300</sup>	44.45 <sup>-0.025/-0.760</sup>	0.76	0.006
		1.125 <sup>+0.002/+0.012</sup>	1.750 <sup>-0.010/-0.030</sup>	0.03	
1.1/4	TRA2031	31.75 <sup>+0.050/+0.300</sup>	49.2 <sup>-0.025/-0.760</sup>	0.76	0.007
		1.250 <sup>+0.002/+0.012</sup>	1.937 <sup>-0.010/-0.030</sup>	0.03	
1.3/8	TRA2233	34.93 <sup>+0.050/+0.300</sup>	52.375 <sup>-0.025/-0.760</sup>	0.76	0.007
		1.375 <sup>+0.002/+0.012</sup>	2.062 <sup>-0.010/-0.030</sup>	0.03	
1.1/2	TRA2435	38.1 <sup>+0.050/+0.300</sup>	55.55 <sup>-0.025/-0.760</sup>	0.76	0.008
		1.500 <sup>+0.002/+0.012</sup>	2.187 <sup>-0.010/-0.030</sup>	0.03	



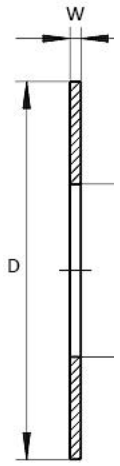
# TRA Series Imperial Thrust Needle Roller Bearing Washers



Shaft Diameter (inch)	Bearing Thrust Washer Part Number	d mm in	D mm in	W mm in	Weight (kg)
1.3/4	TRA2840	44.45 <sup>+0.050/+0.300</sup>	63.5 -0.025/-0.760	0.76	0.010
		1.750 <sup>+0.002/+0.012</sup>	2.500 -0.010/-0.030	0.03	
2	TRA3244	50.8 <sup>+0.050/+0.300</sup>	69.85 -0.025/-0.760	0.76	0.011
		2.000 <sup>+0.002/+0.012</sup>	2.750 -0.010/-0.030	0.03	
2.1/8	TRA3466	53.98 <sup>+0.050/+0.300</sup>	73.025 -0.025/-0.760	0.76	0.012
		2.125 <sup>+0.002/+0.012</sup>	2.875 -0.010/-0.030	0.03	
2.1/4	TRA3648	57.15 <sup>+0.050/+0.300</sup>	76.2 -0.025/-0.760	0.76	0.012
		2.250 <sup>+0.002/+0.012</sup>	3.000 -0.010/-0.030	0.03	
2.1/2	TRA4052	63.5 <sup>+0.050/+0.430</sup>	82.55 -0.025/-0.760	0.76	0.013
		2.500 <sup>+0.002/+0.017</sup>	3.250 -0.010/-0.030	0.03	
2.3/4	TRA4458	69.85 <sup>+0.050/+0.430</sup>	92.075 -0.025/-0.760	0.76	0.018
		2.750 <sup>+0.002/+0.017</sup>	3.625 -0.010/-0.030	0.03	
3	TRA4860	76.2 <sup>+0.050/+0.430</sup>	95.25 -0.025/-0.760	0.76	0.015
		3.000 <sup>+0.002/+0.017</sup>	3.750 -0.010/-0.030	0.03	
3.1/4	TRA5266	82.55 <sup>+0.050/+0.430</sup>	104.78 -0.025/-0.760	0.76	0.020
		3.250 <sup>+0.002/+0.017</sup>	4.125 -0.010/-0.030	0.03	
3.3/4	TRA6074	95.25 <sup>+0.050/+0.430</sup>	117.48 -0.025/-0.760	0.76	0.023
		3.750 <sup>+0.002/+0.017</sup>	4.625 -0.010/-0.030	0.03	
4.1/8	TRA6681	104.78 <sup>+0.050/+0.430</sup>	128.57 -0.025/-0.760	0.76	0.027
		4.125 <sup>+0.002/+0.017</sup>	5.062 -0.010/-0.030	0.03	



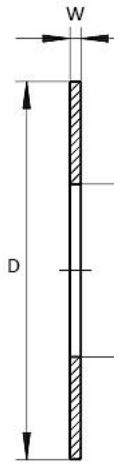
# TRB Series Imperial Thrust Needle Roller Bearing Washers



Shaft Diameter (inch)	Bearing Part Number	d mm in	D mm in	W mm in	Weight (kg)
1/4	TRB411	6.35 <sup>+0.050/+0.300</sup>	17.45 <sup>-0.025/-0.760</sup>	1.52	0.002
		0.250 <sup>+0.002/+0.012</sup>	0.687 <sup>-0.010/-0.030</sup>	0.06	
5/16	TRB512	7.92 <sup>+0.050/+0.300</sup>	19.05 <sup>-0.025/-0.760</sup>	1.52	0.003
		0.312 <sup>+0.002/+0.012</sup>	0.750 <sup>-0.010/-0.030</sup>	0.06	
3/8	TRB613	9.53 <sup>+0.050/+0.300</sup>	20.625 <sup>-0.025/-0.760</sup>	1.52	0.003
		0.375 <sup>+0.002/+0.012</sup>	0.812 <sup>-0.010/-0.030</sup>	0.06	
1/2	TRB815	12.7 <sup>+0.050/+0.300</sup>	23.8 <sup>-0.025/-0.760</sup>	1.52	0.004
		0.500 <sup>+0.002/+0.012</sup>	0.937 <sup>-0.010/-0.030</sup>	0.06	
9/16	TRB916	14.275 <sup>+0.050/+0.300</sup>	25.4 <sup>-0.025/-0.760</sup>	1.52	0.004
		0.562 <sup>+0.002/+0.012</sup>	1.000 <sup>-0.010/-0.030</sup>	0.06	
5/8	TRB1018	15.88 <sup>+0.050/+0.300</sup>	28.575 <sup>-0.025/-0.760</sup>	1.52	0.005
		0.625 <sup>+0.002/+0.012</sup>	1.125 <sup>-0.010/-0.030</sup>	0.06	
3/4	TRB1220	19.05 <sup>+0.050/+0.300</sup>	31.75 <sup>-0.025/-0.760</sup>	1.52	0.006
		0.750 <sup>+0.002/+0.012</sup>	1.250 <sup>-0.010/-0.030</sup>	0.06	
7/8	TRB1423	22.23 <sup>+0.050/+0.300</sup>	36.5 <sup>-0.025/-0.760</sup>	1.52	0.008
		0.875 <sup>+0.002/+0.012</sup>	1.437 <sup>-0.010/-0.030</sup>	0.06	
7/8	TRB1427	22.23 <sup>+0.050/+0.300</sup>	42.85 <sup>-0.025/-0.760</sup>	1.52	0.013
		0.875 <sup>+0.002/+0.012</sup>	1.687 <sup>-0.010/-0.030</sup>	0.06	
1	TRB1625	25.4 <sup>+0.050/+0.300</sup>	39.675 <sup>-0.025/-0.760</sup>	1.52	0.009
		1.000 <sup>+0.002/+0.012</sup>	1.562 <sup>-0.010/-0.030</sup>	0.06	
1.1/8	TRB1828	28.58 <sup>+0.050/+0.300</sup>	44.45 <sup>-0.025/-0.760</sup>	1.52	0.011
		1.125 <sup>+0.002/+0.012</sup>	1.750 <sup>-0.010/-0.030</sup>	0.06	
1.1/4	TRB2031	31.75 <sup>+0.050/+0.300</sup>	49.2 <sup>-0.025/-0.760</sup>	1.52	0.014
		1.250 <sup>+0.002/+0.012</sup>	1.937 <sup>-0.010/-0.030</sup>	0.06	
1.3/8	TRB2233	34.93 <sup>+0.050/+0.300</sup>	52.375 <sup>-0.025/-0.760</sup>	1.52	0.015
		1.375 <sup>+0.002/+0.012</sup>	2.062 <sup>-0.010/-0.030</sup>	0.06	
1.1/2	TRB2435	38.1 <sup>+0.050/+0.300</sup>	55.55 <sup>-0.025/-0.760</sup>	1.52	0.015
		1.500 <sup>+0.002/+0.012</sup>	2.187 <sup>-0.010/-0.030</sup>	0.06	



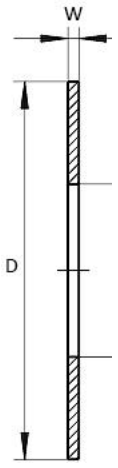
# TRB Series Imperial Thrust Needle Roller Bearing Washers



Shaft Diameter (inch)	Bearing Part Number	d mm in	D mm in	W mm in	Weight (kg)
1.3/4	TRB2840	44.45 <sup>+0.050/+0.300</sup>	63.5 -0.025/-0.760	1.52	0.020
		1.750 <sup>+0.002/+0.012</sup>	2.500 -0.010/-0.030	0.06	
2	TRB3244	50.8 <sup>+0.050/+0.300</sup>	69.85 -0.025/-0.760	1.52	0.022
		2.000 <sup>+0.002/+0.012</sup>	2.750 -0.010/-0.030	0.06	
2.1/8	TRB3466	53.98 <sup>+0.050/+0.300</sup>	73.025 -0.025/-0.760	1.52	0.024
		2.125 <sup>+0.002/+0.012</sup>	2.875 -0.010/-0.030	0.06	
2.1/4	TRB3648	57.15 <sup>+0.050/+0.300</sup>	76.2 -0.025/-0.760	1.52	0.022
		2.250 <sup>+0.002/+0.012</sup>	3.000 -0.010/-0.030	0.06	
2.1/2	TRB4052	63.5 <sup>+0.050/+0.430</sup>	82.55 -0.025/-0.760	1.52	0.027
		2.500 <sup>+0.002/+0.017</sup>	3.250 -0.010/-0.030	0.06	
2.3/4	TRB4458	69.85 <sup>+0.050/+0.430</sup>	92.075 -0.025/-0.760	1.52	0.035
		2.750 <sup>+0.002/+0.017</sup>	3.625 -0.010/-0.030	0.06	
3	TRB4860	76.2 <sup>+0.050/+0.430</sup>	95.25 -0.025/-0.760	1.52	0.032
		3.000 <sup>+0.002/+0.017</sup>	3.750 -0.010/-0.030	0.06	
3.1/4	TRB5266	82.55 <sup>+0.050/+0.430</sup>	104.78 -0.025/-0.760	1.52	-
		3.250 <sup>+0.002/+0.017</sup>	4.125 -0.010/-0.030	0.06	
3.3/4	TRB6074	95.25 <sup>+0.050/+0.430</sup>	117.48 -0.025/-0.760	1.52	-
		3.750 <sup>+0.002/+0.017</sup>	4.625 -0.010/-0.030	0.06	
4.1/8	TRB6681	104.78 <sup>+0.050/+0.430</sup>	128.57 -0.025/-0.760	1.52	-
		4.125 <sup>+0.002/+0.017</sup>	5.062 -0.010/-0.030	0.06	



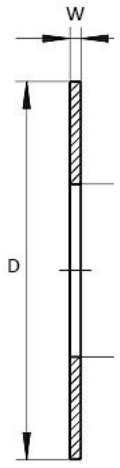
# TRC Series Imperial Thrust Needle Roller Bearing Washers



Shaft Diameter (inch)	Bearing Part Number	d mm in	D mm in	W mm in	Weight (kg)
1/4	TRC411	6.35 <sup>+0.050/+0.300</sup>	17.45 <sup>-0.025/-0.760</sup>	2.34	0.004
		0.250 <sup>+0.002/+0.012</sup>	0.687 <sup>-0.010/-0.030</sup>	0.092	
5/16	TRC512	7.92 <sup>+0.050/+0.300</sup>	19.05 <sup>-0.025/-0.760</sup>	-	-
		0.312 <sup>+0.002/+0.012</sup>	0.750 <sup>-0.010/-0.030</sup>	-	
3/8	TRC613	9.53 <sup>+0.050/+0.300</sup>	20.625 <sup>-0.025/-0.760</sup>	2.34	0.004
		0.375 <sup>+0.002/+0.012</sup>	0.812 <sup>-0.010/-0.030</sup>	0.092	
1/2	TRC815	12.7 <sup>+0.050/+0.300</sup>	23.8 <sup>-0.025/-0.760</sup>	2.34	0.005
		0.500 <sup>+0.002/+0.012</sup>	0.937 <sup>-0.010/-0.030</sup>	0.092	
9/16	TRC916	14.275 <sup>+0.050/+0.300</sup>	25.4 <sup>-0.025/-0.760</sup>	2.34	0.006
		0.562 <sup>+0.002/+0.012</sup>	1.000 <sup>-0.010/-0.030</sup>	0.092	
5/8	TRC1018	15.88 <sup>+0.050/+0.300</sup>	28.575 <sup>-0.025/-0.760</sup>	2.34	0.008
		0.625 <sup>+0.002/+0.012</sup>	1.125 <sup>-0.010/-0.030</sup>	0.092	
3/4	TRC1220	19.05 <sup>+0.050/+0.300</sup>	31.75 <sup>-0.025/-0.760</sup>	2.34	0.010
		0.750 <sup>+0.002/+0.012</sup>	1.250 <sup>-0.010/-0.030</sup>	0.092	
7/8	TRC1423	22.23 <sup>+0.050/+0.300</sup>	36.5 <sup>-0.025/-0.760</sup>	2.34	0.012
		0.875 <sup>+0.002/+0.012</sup>	1.437 <sup>-0.010/-0.030</sup>	0.092	
7/8	TRC1427	22.23 <sup>+0.050/+0.300</sup>	42.85 <sup>-0.025/-0.760</sup>	2.34	0.020
		0.875 <sup>+0.002/+0.012</sup>	1.687 <sup>-0.010/-0.030</sup>	0.092	
1	TRC1625	25.4 <sup>+0.050/+0.300</sup>	39.675 <sup>-0.025/-0.760</sup>	2.34	0.013
		1.000 <sup>+0.002/+0.012</sup>	1.562 <sup>-0.010/-0.030</sup>	0.092	
1.1/8	TRC1828	28.58 <sup>+0.050/+0.300</sup>	44.45 <sup>-0.025/-0.760</sup>	2.34	0.017
		1.125 <sup>+0.002/+0.012</sup>	1.750 <sup>-0.010/-0.030</sup>	0.092	
1.1/4	TRC2031	31.75 <sup>+0.050/+0.300</sup>	49.2 <sup>-0.025/-0.760</sup>	2.34	0.020
		1.250 <sup>+0.002/+0.012</sup>	1.937 <sup>-0.010/-0.030</sup>	0.092	
1.3/8	TRC2233	34.93 <sup>+0.050/+0.300</sup>	52.375 <sup>-0.025/-0.760</sup>	2.34	0.018
		1.375 <sup>+0.002/+0.012</sup>	2.062 <sup>-0.010/-0.030</sup>	0.092	
1.1/2	TRC2435	38.1 <sup>+0.050/+0.300</sup>	55.55 <sup>-0.025/-0.760</sup>	2.34	0.023
		1.500 <sup>+0.002/+0.012</sup>	2.187 <sup>-0.010/-0.030</sup>	0.092	



# TRC Series Imperial Thrust Needle Roller Bearing Washers



Shaft Diameter (inch)	Bearing Part Number	d mm in	D mm in	W mm in	Weight (kg)
1.3/4	TRC2840	44.45 <sup>+0.050/+0.300</sup>	63.5 <sup>-0.025/-0.760</sup>	2.34	0.029
		1.750 <sup>+0.002/+0.012</sup>	2.500 <sup>-0.010/-0.030</sup>	0.092	
2	TRC3244	50.8 <sup>+0.050/+0.300</sup>	69.85 <sup>-0.025/-0.760</sup>	2.34	0.033
		2.000 <sup>+0.002/+0.012</sup>	2.750 <sup>-0.010/-0.030</sup>	0.092	
2.1/8	TRC3466	53.98 <sup>+0.050/+0.300</sup>	73.025 <sup>-0.025/-0.760</sup>	2.34	0.035
		2.125 <sup>+0.002/+0.012</sup>	2.875 <sup>-0.010/-0.030</sup>	0.092	
2.1/4	TRC3648	57.15 <sup>+0.050/+0.300</sup>	76.2 <sup>-0.025/-0.760</sup>	2.34	0.037
		2.250 <sup>+0.002/+0.012</sup>	3.000 <sup>-0.010/-0.030</sup>	0.092	
2.1/2	TRC4052	63.5 <sup>+0.050/+0.430</sup>	82.55 <sup>-0.025/-0.760</sup>	2.34	0.041
		2.500 <sup>+0.002/+0.017</sup>	3.250 <sup>-0.010/-0.030</sup>	0.092	
2.3/4	TRC4458	69.85 <sup>+0.050/+0.430</sup>	92.075 <sup>-0.025/-0.760</sup>	2.34	0.051
		2.750 <sup>+0.002/+0.017</sup>	3.625 <sup>-0.010/-0.030</sup>	0.092	
3	TRC4860	76.2 <sup>+0.050/+0.430</sup>	95.25 <sup>-0.025/-0.760</sup>	2.34	0.061
		3.000 <sup>+0.002/+0.017</sup>	3.750 <sup>-0.010/-0.030</sup>	0.092	
3.1/4	TRC5266	82.55 <sup>+0.050/+0.430</sup>	104.78 <sup>-0.025/-0.760</sup>	2.34	-
		3.250 <sup>+0.002/+0.017</sup>	4.125 <sup>-0.010/-0.030</sup>	0.092	
3.3/4	TRC6074	95.25 <sup>+0.050/+0.430</sup>	117.48 <sup>-0.025/-0.760</sup>	2.34	-
		3.750 <sup>+0.002/+0.017</sup>	4.625 <sup>-0.010/-0.030</sup>	0.092	
4.1/8	TRC6681	104.78 <sup>+0.050/+0.430</sup>	128.57 <sup>-0.025/-0.760</sup>	2.34	-
		4.125 <sup>+0.002/+0.017</sup>	5.062 <sup>-0.010/-0.030</sup>	0.092	